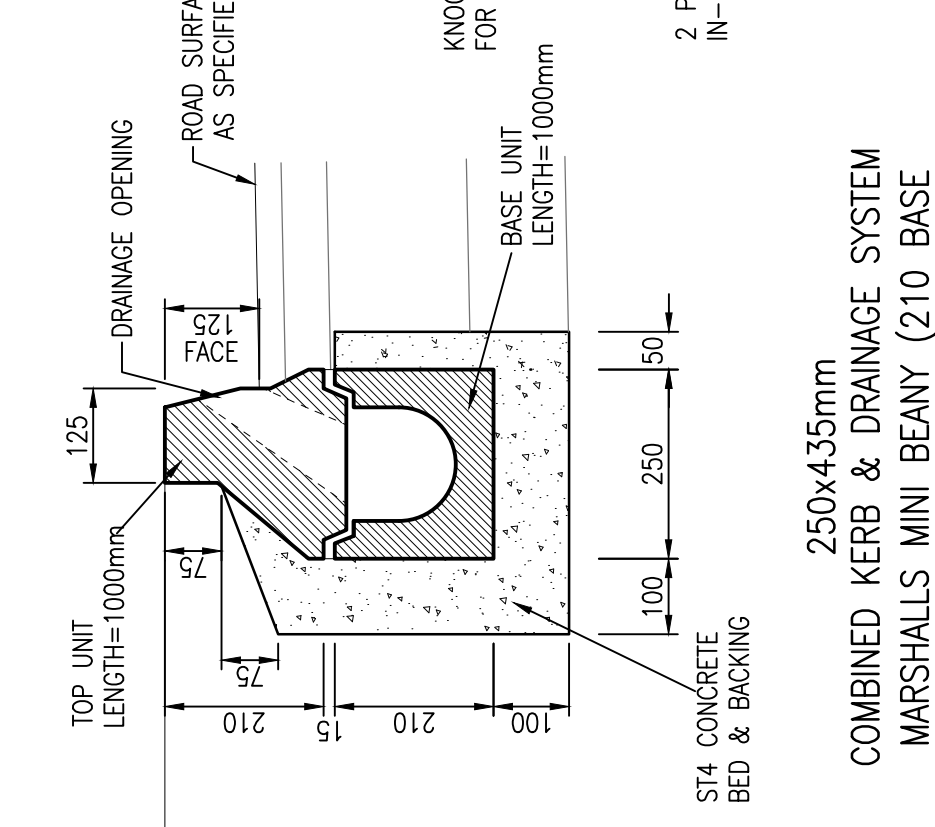
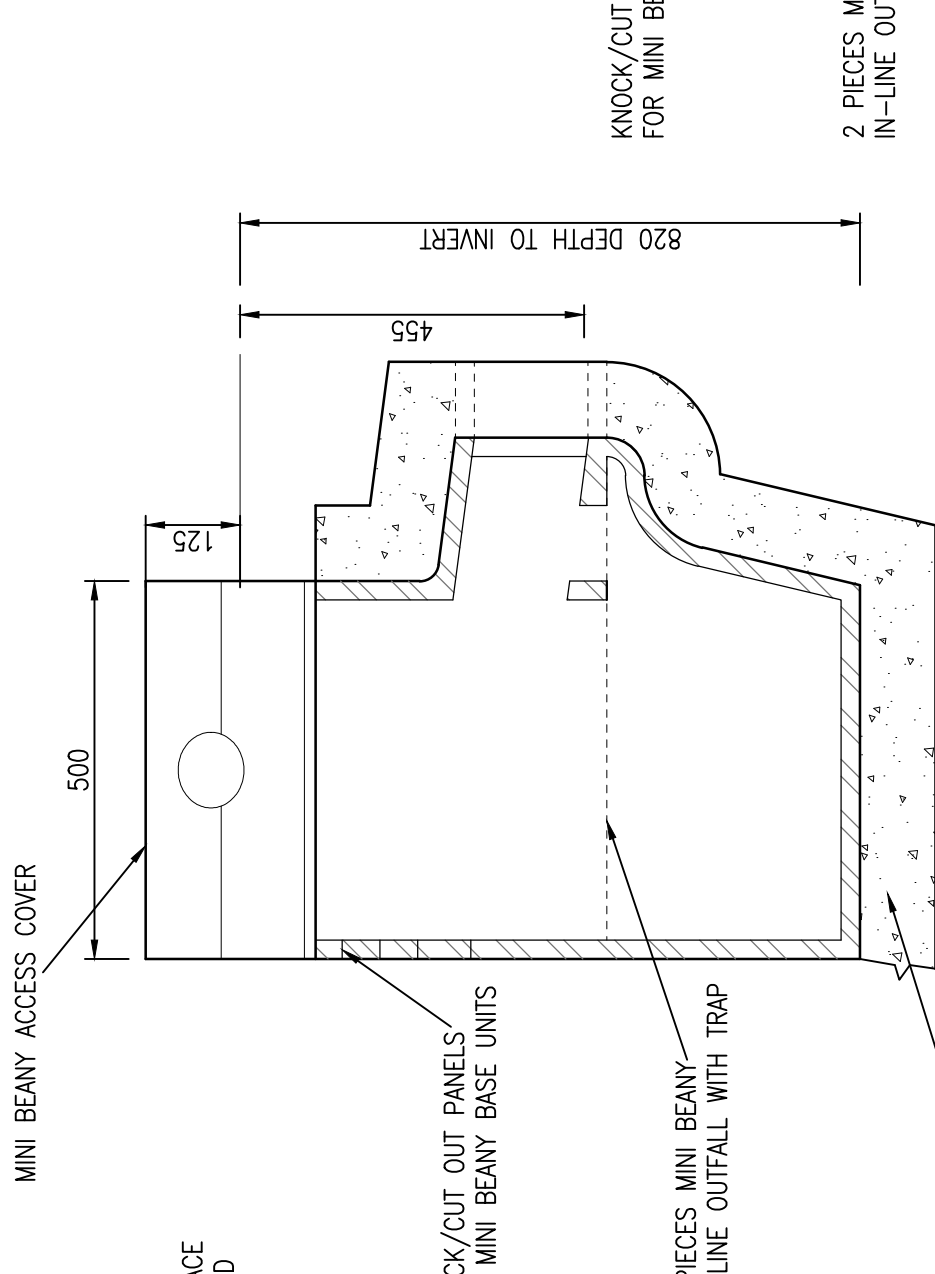
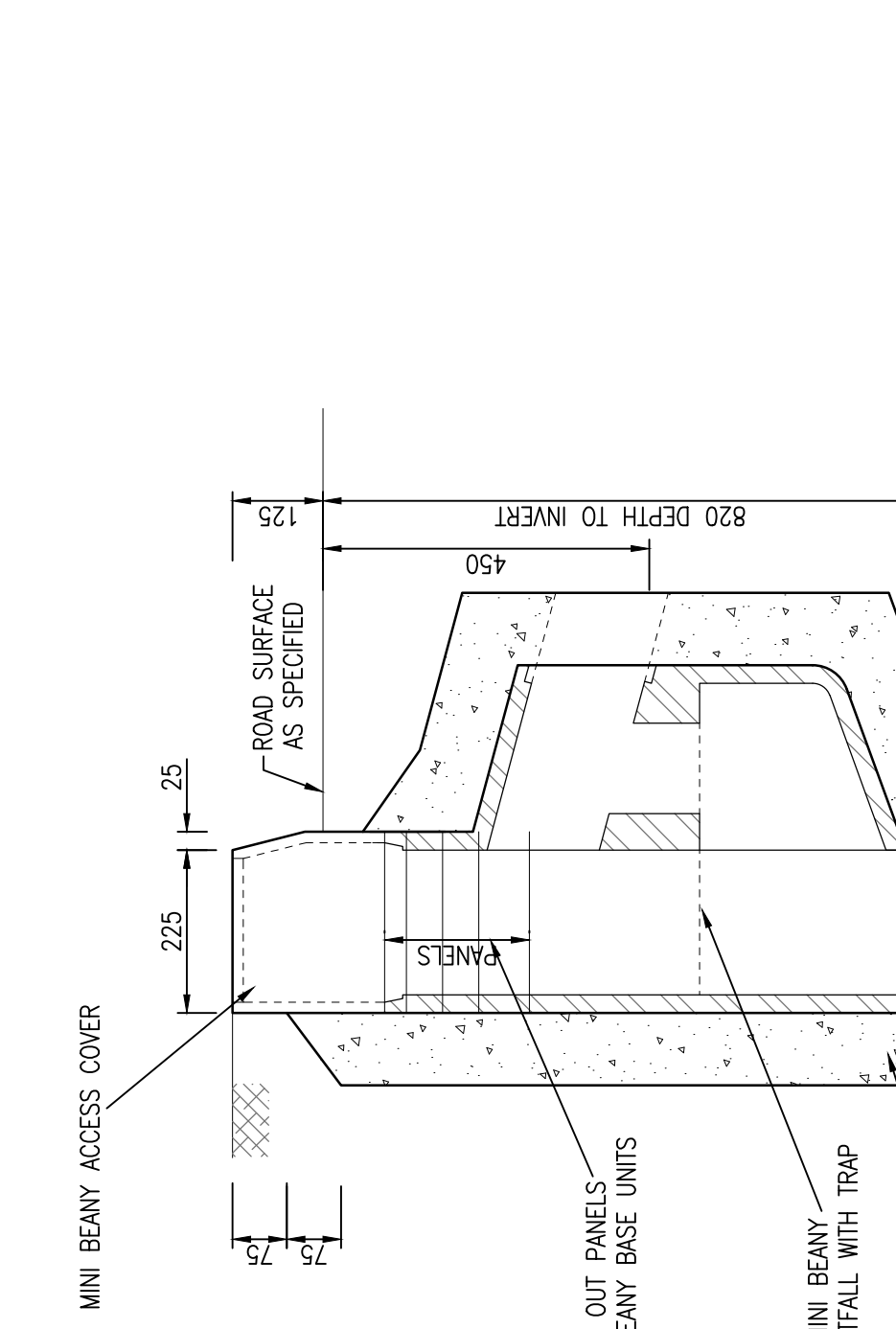
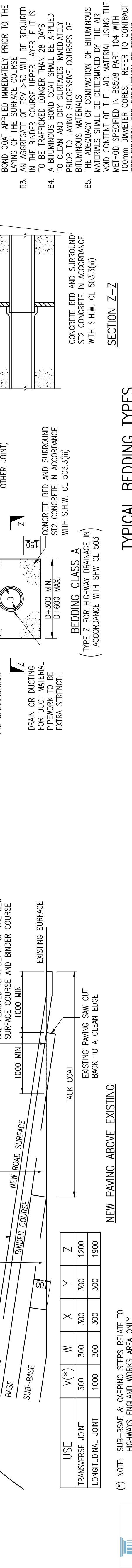
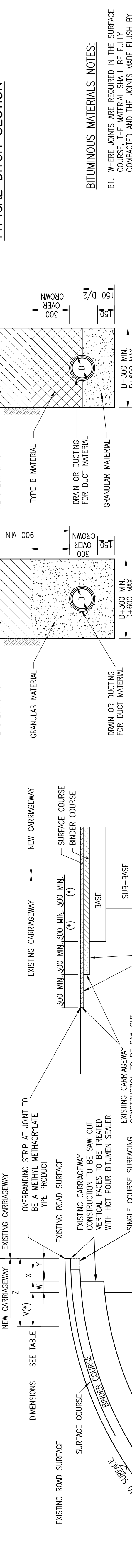
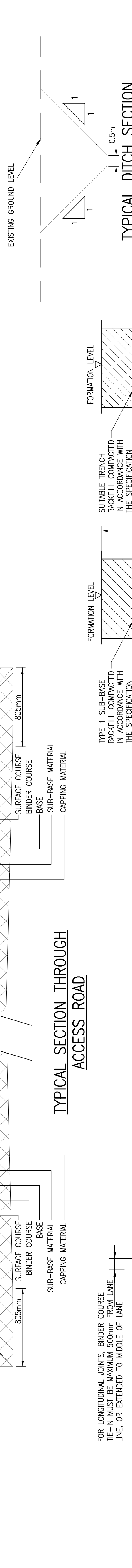
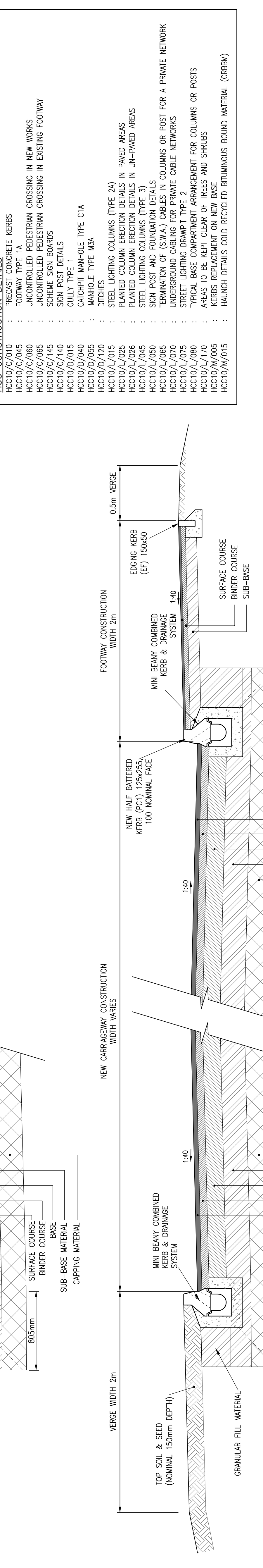
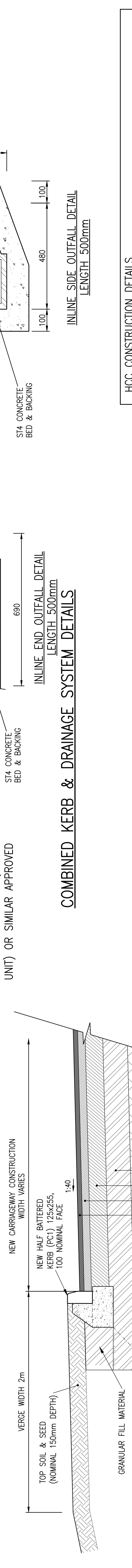


NOTES:

- DO NOT SCALE FROM THIS DRAWING. ALL DIMENSIONS ARE IN MILLIMETRES, UNLESS STATED OTHERWISE.
- THIS DRAWING SHALL BE READ IN CONJUNCTION WITH ALL RELEVANT SCHEME DRAWINGS AND SPECIFICATIONS.
- ALL WORKS WITHIN THE PUBLIC HIGHWAY SHALL BE CARRIED OUT AND COMPLY WITH THE REQUIREMENTS OF THE DTP TRAFFIC SIGNS MANUAL CHAPTER 6 - TRAFFIC SAFETY MEASURES AND SIGNS FOR ROAD WORKS AND TEMPORARY SITUATIONS.
- ALL WORKS SHALL BE CARRIED OUT IN STRICT ACCORDANCE WITH THE SPECIFICATION FOR HIGHWAY WORKS - MODIFIED AND EXTENDED, INCLUDING HAMPSHIRE COUNTY COUNCIL'S SUPPLEMENTARY CLAUSES.
- THE CONTRACTOR SHALL NOTIFY THE ENGINEER OF ANY OCCURRENCES OF SOFT SPOTS IN THE SUBGRADE MATERIAL WITHIN THE CARRIAGEWAY NOMINAL LOAD LINE. SOFT SPOTS SHALL BE REMOVED AND REPLACED WITH COMPACTED CAPPING MATERIAL AS AGREED WITH THE ENGINEER.
- HANDLING OF KERBS, EDGINGS AND PAVORS (I.E. LIFTING, PLACING, MANOEUVERING) SHALL BE BY MECHANICAL OR SIMILAR PLANT OWNED BY THE CONTRACTOR. WORKERS MUST ASSESS THEIR STAIRS TO REDUCE THE RISK OF INJURY TO THEMSELVES AND OTHERS. REFER TO MANUAL HANDLING OPERATIONS REGULATIONS 1992 (AS AMENDED 2004).
- ALL PROPRIETARY PRODUCTS TO BE INSTALLED RECOMMENDED BY THE MANUFACTURERS.
- VERTICAL FACES OF EXISTING BITUMINOUS MATERIALS TO BE PRIME WITH BITUMEN TO ACCEPT BITUMINOUS MATERIALS TO BE SPRAYED WITH A BOND COAT IN ACCORDANCE WITH APPENDIX 7/4.
- GULLY PITS AND IRONWORK SHALL COMPLY WITH BS1 KITEMARK CERTIFICATE SCHEME AND SHALL BE MARKED WITH BS1 TRADEMARK. 12. ALL COVERS AND FRAMES SHALL BE MADE OF DUCTILE IRON AND SHALL BE BOTH CERTIFIED BY A UKAS ACCREDITED BODY AND TO BS EN 124 (CLASS D400) UNLESS NOTED BY THE OVERSEEING ORGANISATION.
- EQUILIBRIUM CBR TESTS SHALL BE TAKEN TO CONFIRM THE CAPPING LAYER/SUB-BASE REQUIREMENTS AND TO FINALISE THE OVERALL CONSTRUCTION THICKNESS PRIOR TO COMMENCEMENT.

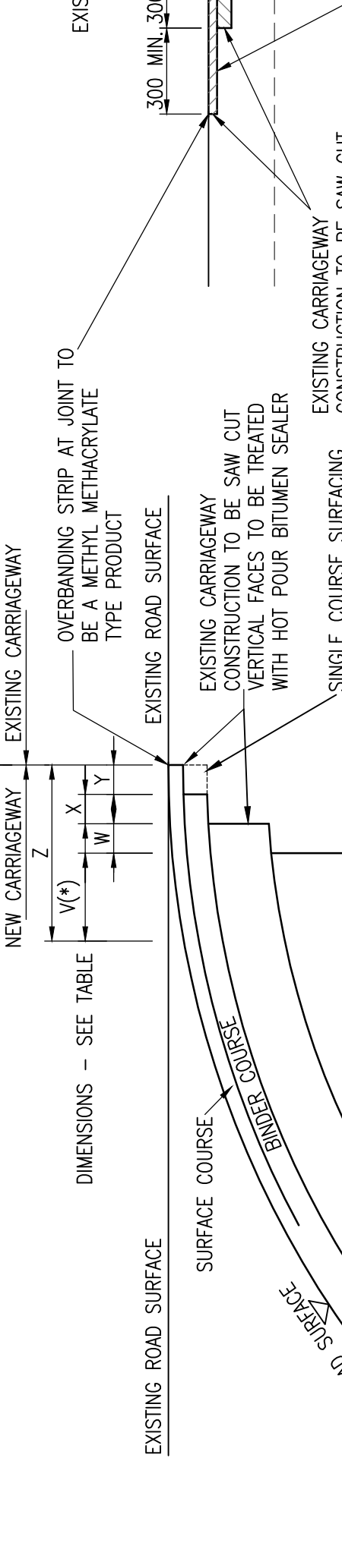
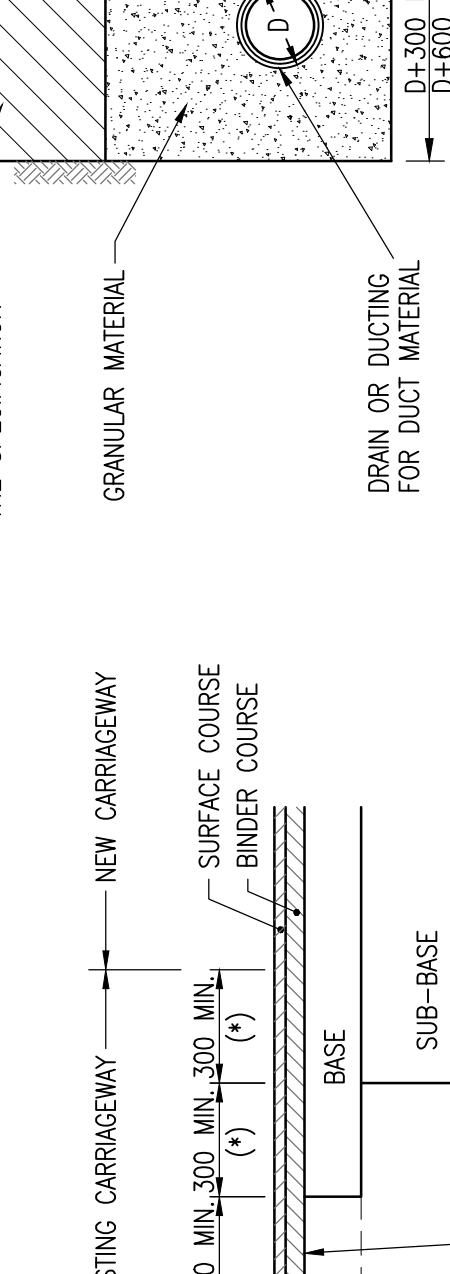
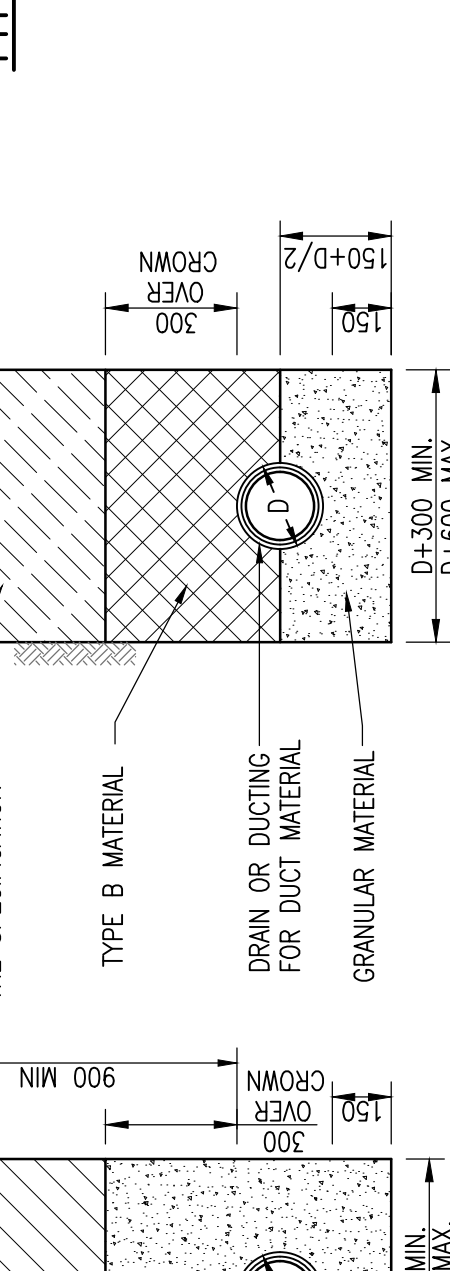
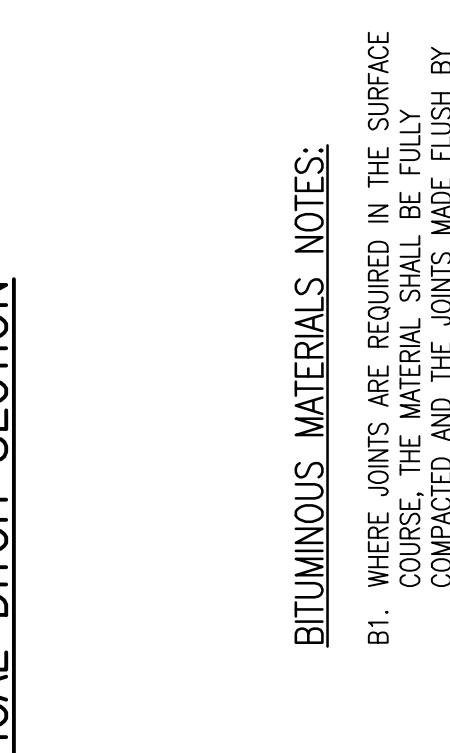


NEW FULL DEPTH CARRIAGEWAY CONSTRUCTION			COMMENTS
SURFACE COURSE	HOT ROLLED ASPHALT: HRA 35/14 SURF WITH PRE-COATED CHIPPINGS	50mm	IN ACCORDANCE WITH S.H.W. CLAUSE 911 & TO BS EN 13108 PART 4 : PSV=60 CHIP SIZE = 8/10
BINDER COURSE	ASPHALT CONCRETE: AC 20 DENSE BASE	75mm	40/60 PEN BITUMEN TO BS EN 13108 PART 1
BASE	ASPHALT CONCRETE: AC 22 DENSE BASE	180mm	40/60 PEN BITUMEN TO BS EN 13108 PART 1
SUB BASE	CDD OR CRBM MATERIAL (TYPE 1 IF UNAVAILABLE)	250mm	IN ACCORDANCE WITH S.H.W. CLAUSE 891A OR 945SR.
CAPPING	CDD OR CRBM MATERIAL (64/765 IF UNAVAILABLE)	250mm	IN ACCORDANCE WITH S.H.W. CLAUSE 891A OR 945SR.
FOOTWAY/CYCLEWAY CONSTRUCTION HCC STANDARD FOOTWAY CONSTRUCTION TYPE 1A			COMMENTS
SURFACE COURSE	ASPHALT CONCRETE: AC 6 DENSE SURF	20mm	100/150 PEN BITUMEN PSV=45 FOR FOOTWAY
BINDER COURSE	ASPHALT CONCRETE: AC 20 OPEN BIN	45mm	100/150 PEN BITUMEN TO BS EN 13108 PART 1
SUB BASE	GRANULAR SUB BASE MATERIAL TYPE 1	150mm	IN ACCORDANCE WITH S.H.W. CLAUSE 891A OR 892AR.



(* NOTE: SUB-BASE & CAPPING STEPS RELATE TO HIGHWAYS ENGLAND WORKS AREA ONLY)

- HCC CONSTRUCTION DETAILS**
- HCC10/C/010 : PRECAST CONCRETE KERBS
 - HCC10/C/045 : FOOTWAY TYPE 1A
 - HCC10/C/060 : UNCONTROLLED PEDESTRIAN CROSSING IN NEW WORKS
 - HCC10/C/065 : UNCONTROLLED PEDESTRIAN CROSSING IN EXISTING FOOTWAY
 - HCC10/C/145 : SCHEME SIGN BOARDS
 - HCC10/C/140 : SIGN POST DETAILS
 - HCC10/D/015 : GULLY TYPE 1
 - HCC10/D/040 : CATCHPIPS MANHOLE TYPE CIA
 - HCC10/D/055 : MANHOLE TYPE M3A
 - HCC10/D/120 : DITCHES
 - HCC10/L/015 : STEEL LIGHTING COLUMNS (TYPE 2A)
 - HCC10/L/025 : PLANTED COLUMN ERECTION DETAILS IN PAVED AREAS
 - HCC10/L/026 : STEEL LIGHTING COLUMNS (TYPE 3)
 - HCC10/L/045 : SIGN POST AND FOUNDATION DETAILS
 - HCC10/L/065 : TERMINATION OF (S.W.A.) CABLES IN COLUMNS OR POST FOR A PRIVATE NETWORK
 - HCC10/L/070 : UNDERGROUND CABLING FOR PRIVATE CABLE NETWORKS
 - HCC10/L/075 : STREET LIGHTING DRAWPIPS TYPE 2
 - HCC10/L/080 : TYPICAL BASE COMPARTMENT ARRANGEMENT FOR COLUMNS OR POSTS
 - HCC10/L/170 : AREAS TO BE KEPT CLEAR OF TREES AND SHRUBS
 - HCC10/M/005 : KERBS REPLACEMENT ON NEW BASE
 - HCC10/M/015 : HAUNCH DETAILS COLD RECYCLED BITUMINOUS BOUND MATERIAL (CRBM)



BITUMINOUS MATERIALS NOTES:

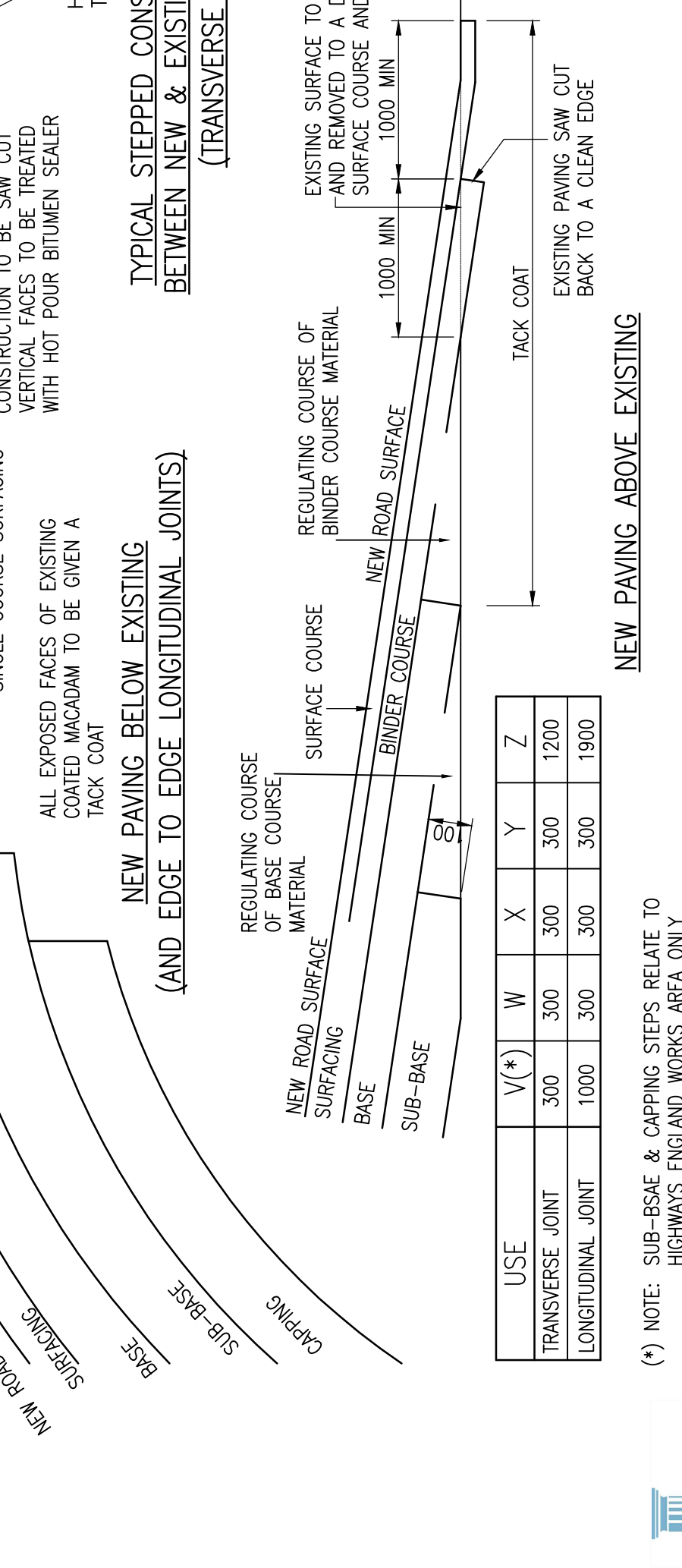
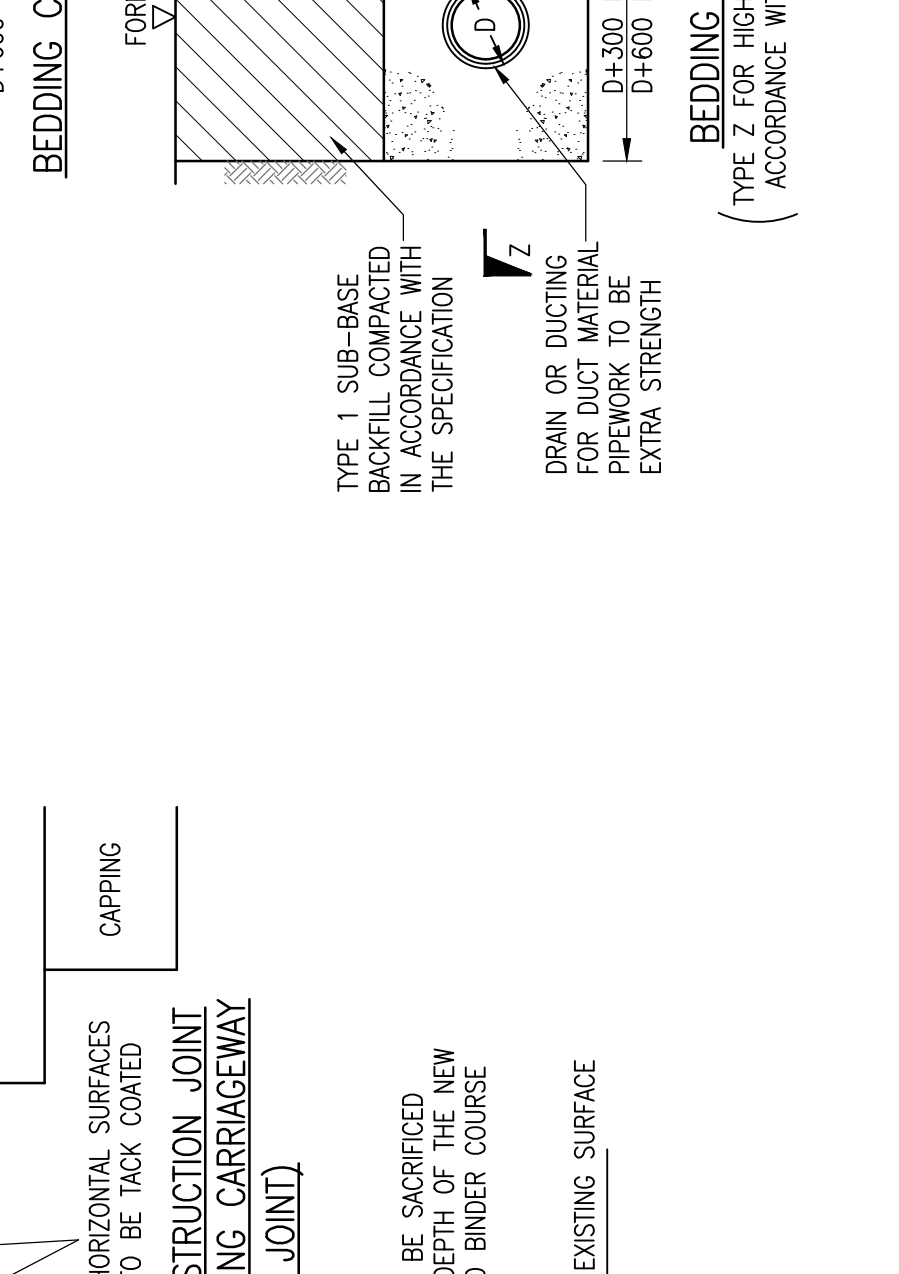
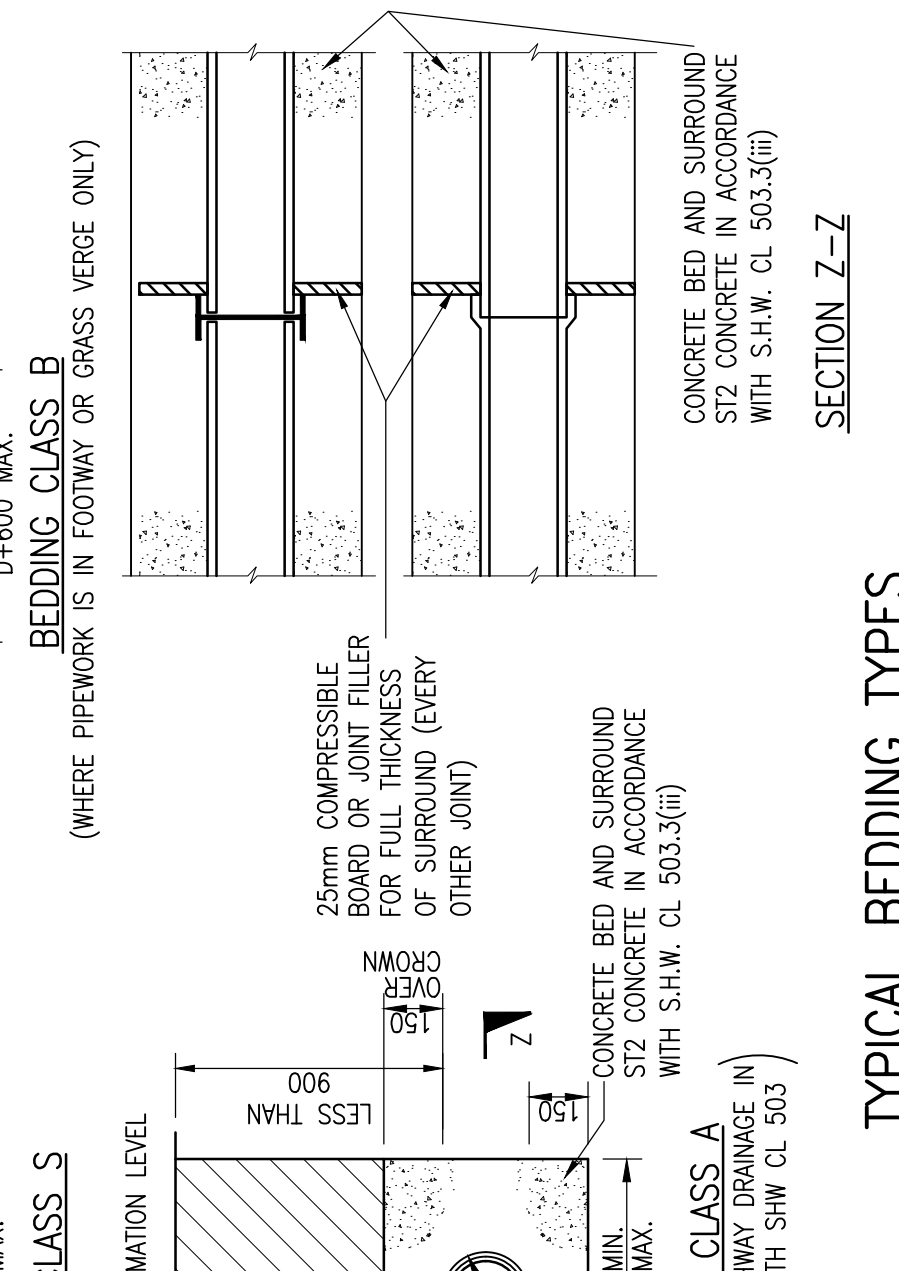
B1. WHERE JOINTS ARE REQUIRED IN THE SURFACE COURSE THE MATERIAL SHALL BE FULLY COMPACTED AND THE JOINTS MADE FLUSH BY CUTTING BACK THE SURFACE TO A DISTANCE OF NOT LESS THAN THE SPECIFIED THICKNESS. THE CUTTING BACK SHALL REMOVE ALL VISIBLE SEGREGATED AND LOOSE MATERIAL. ALL LOOSESEED MATERIAL SHALL BE DISCARDED. THE VERTICAL FACE COATED EVENLY WITH A SUITABLE BITUMEN BASED PRODUCT. ALL JOINTS SHALL BE OFFSET AT LEAST 300mm FROM PARALLEL JOINTS IN THE LAYER BELOW.

B2. TEMPORARY RUNNING SURFACE OR LAYING OF THE SURFACE COURSE DOES NOT TAKE PLACE WITHIN 3 DAYS OF THE SURFACE OF THE BINDER. THE SURFACE SHALL BE THOROUGHLY CLEANED AND A BOND COAT APPLIED IMMEDIATELY PRIOR TO THE LAYING OF THE SURFACE COURSE.

B3. AN AGGREGATE OF PSV >50 WILL BE REQUIRED IN THE BINDER COURSE UPPER LAYER IF IT IS TO BE TRAFFICKED LONGER THAN 28 DAYS.

B4. A BITUMINOUS BOND COAT SHALL BE APPLIED PRIOR TO LAYING SUCCESSIVE COURSES OF SURFACE COURSE MATERIAL.

B5. THE VOID CONTENT OF BITUMINOUS MATERIALS SHALL BE DETERMINED BY THE AIR VOID CONTENT OF THE LAD MATERIAL USING THE METHOD SPECIFIED IN BS598 PART 104 WITH 100mm DIAMETER CORES. REFER TO CONTRACT SPECIFICATION FOR FREQUENCY OF TESTING.



TYPICAL BEDDING TYPES